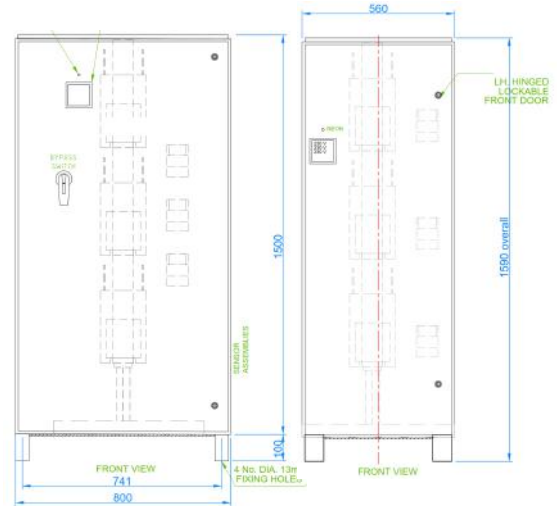


EMS2101

3 PHASE DATASHEET

Electromechanical stabiliser ranging from 54KVA to 272KVA, with correction ranges of up to $\pm 30\%$

The EMS2101 from Watford Control is constructed from a heavy duty IP20 steel enclosure, complete with digital output meter, MOV's / Transient Clippers, Class II surge suppression and lockable doors as standard. Unique, fully independent phase control allows for each phase output to be set differently (if required) to compensate for voltage drops across any given site.



Standard Features

Type	EMS2101
Dimensions (mm) W x D x H	800 (with bypass) 560 x 1025 x 1600
Weight	545Kg
Output accuracy	$\pm 0.5\%$
Admitted load variation	Up to 100 %
Admitted load imbalance	100 %
Cooling	Natural air ventilation
Ambient temperature	-25 °C to +45°C
Storage temperature	-25 °C to +60°C
Max relative humidity	95%
Admitted overload	Ten times the rated current up to 2 seconds. Three times up to 1 minute. Twice up to 5 minutes.
Harmonic distortion	None introduced
Colour	RAL 7032 (others available on request)
Protection degree	IP20
Installation	IP20 Suitable for indoor use only.
Audible Noise Level	Less than 50dB at 1m distance
Low internal impedance	Capable of sustaining high surge currents.
Power Factor	No effect on the performance

EMS2101

3 PHASE DATASHEET

Electromechanical stabiliser ranging from 54KVA to 272KVA, with correction ranges of up to $\pm 30\%$

Ranges

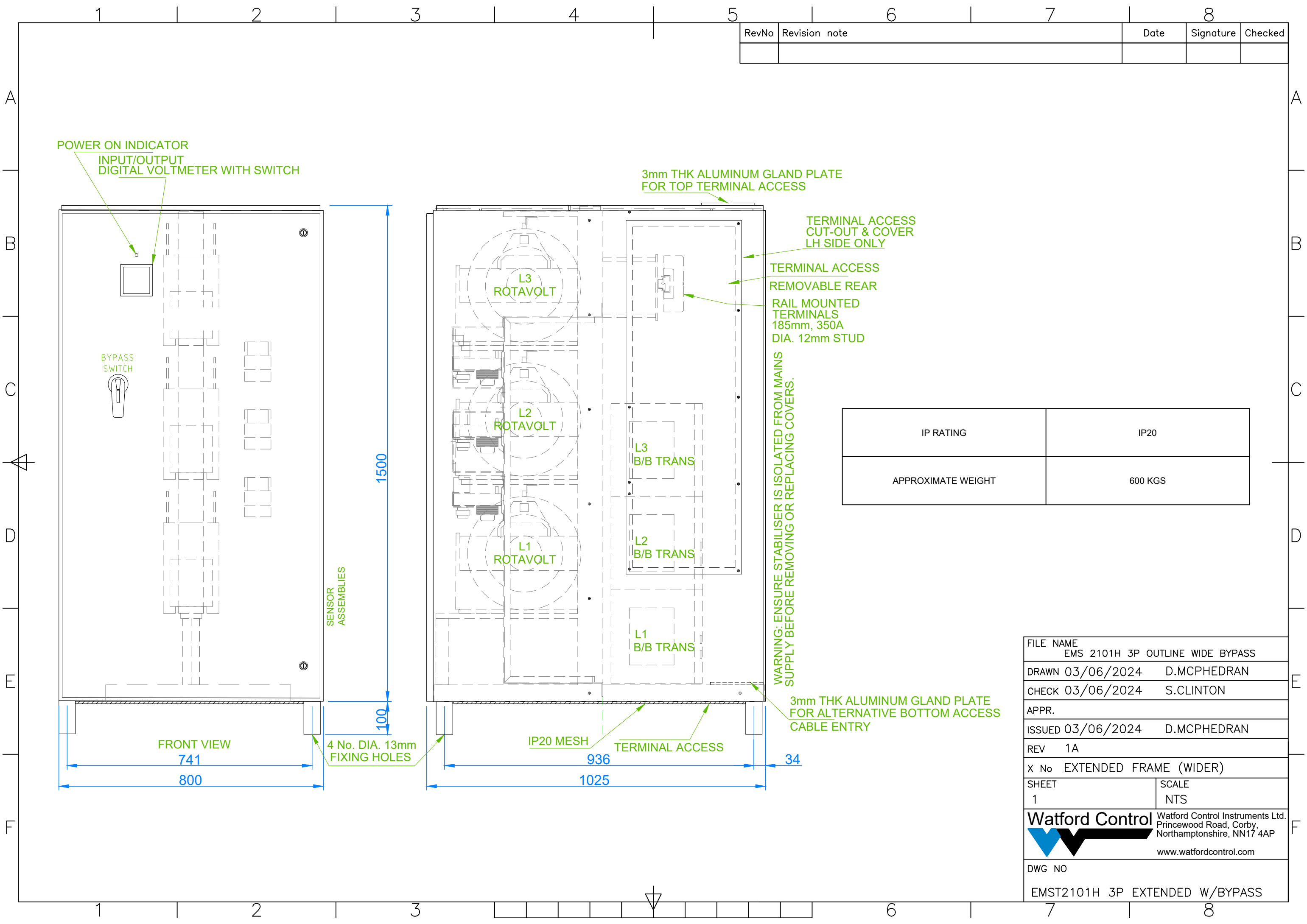
Model	Input Range	Rated Power (KVA)	Maximum Output (A)	Maximum Input (A)	Input Voltage Range
R8	$\pm 8\%$	272	394	428	368 - 432
R10	$\pm 10\%$	213	308	342	360 - 440
R12	$\pm 12\%$	173	251	285	352 - 448
R15	$\pm 15\%$	133	193	227	340 - 460
R18	$\pm 18\%$	107	155	189	328 - 472
R20	$\pm 20\%$	94	136	170	320 - 480
R23	$\pm 23\%$	78	113	147	308 - 492
R25	$\pm 25\%$	70	101	135	300 - 500
R30	$\pm 30\%$	54	78	111	280 - 520

Optional Extras

Input Breaker
 Output breaker
 Bypass switch
 Under/over voltage protection

Class I surge suppression
 IP20 to IP54 available
 Powermap Online – Real time monitoring

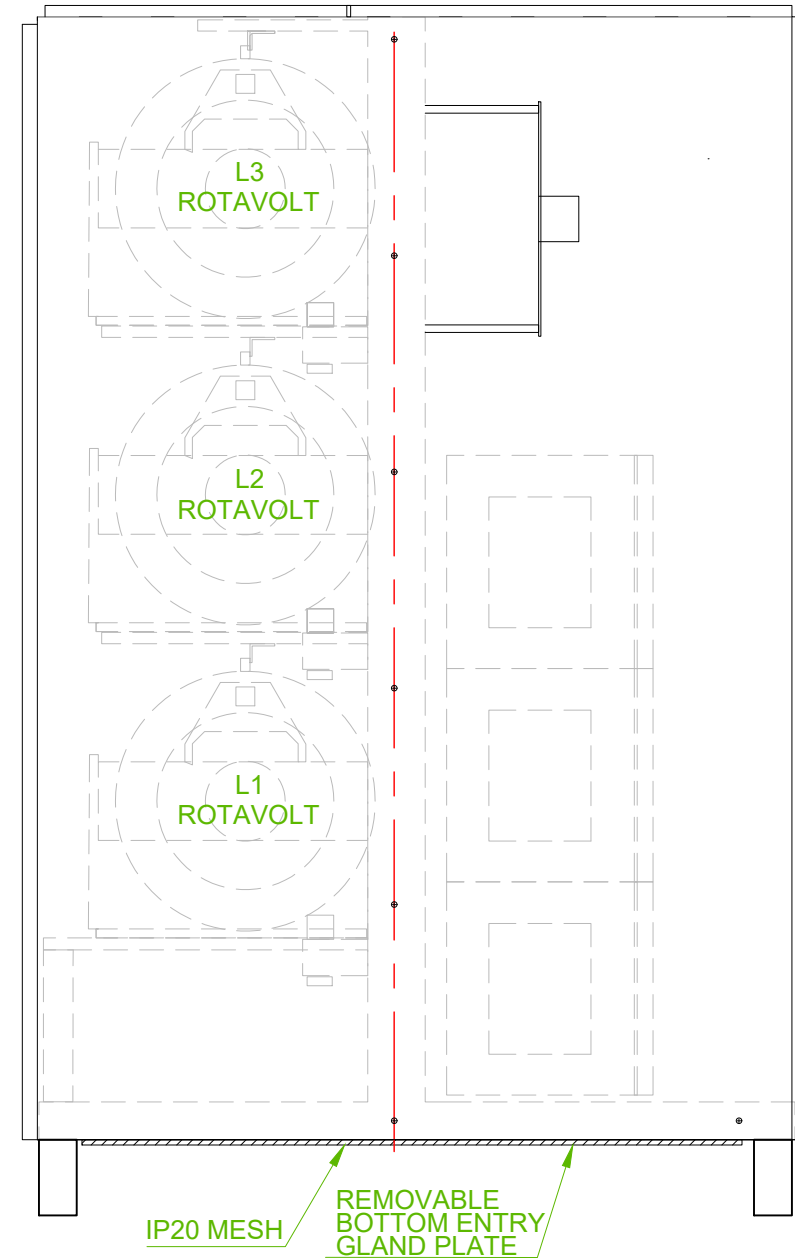
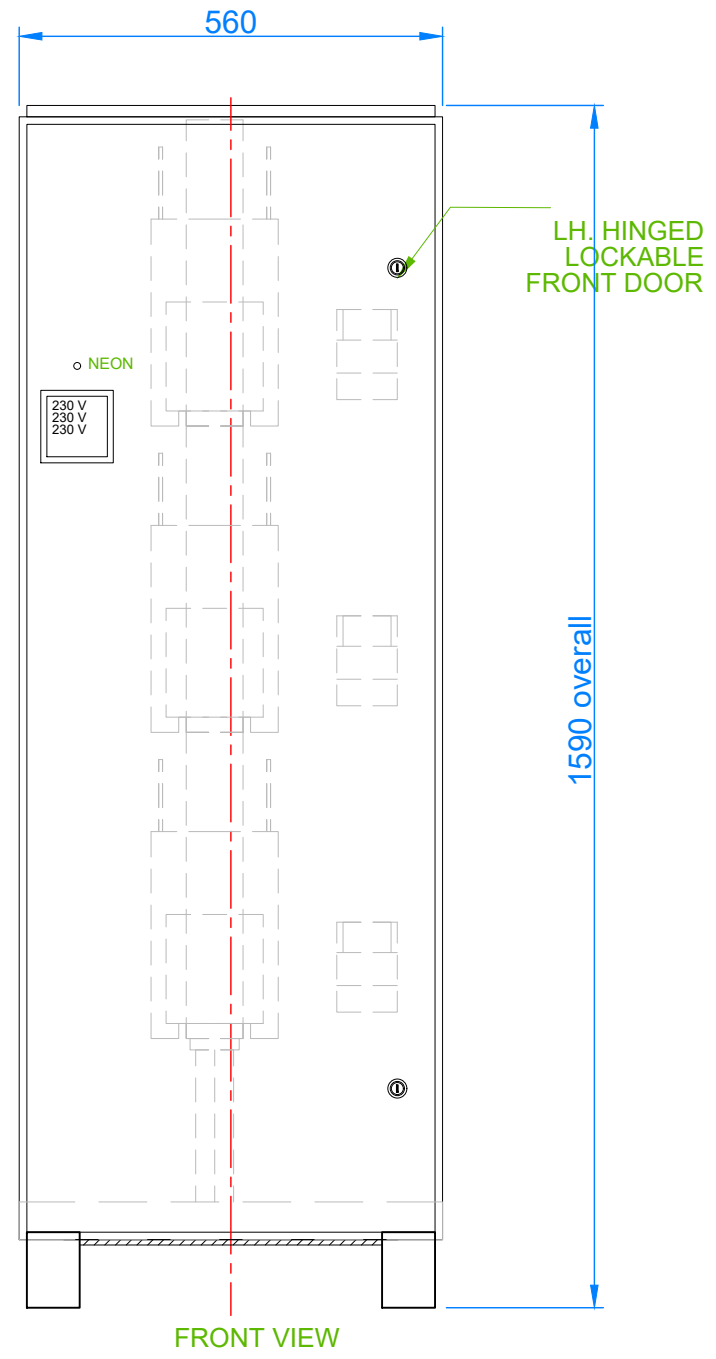
RevNo	Revision note	Date	Signature	Checked



IP RATING	IP20
APPROXIMATE WEIGHT	600 KGS

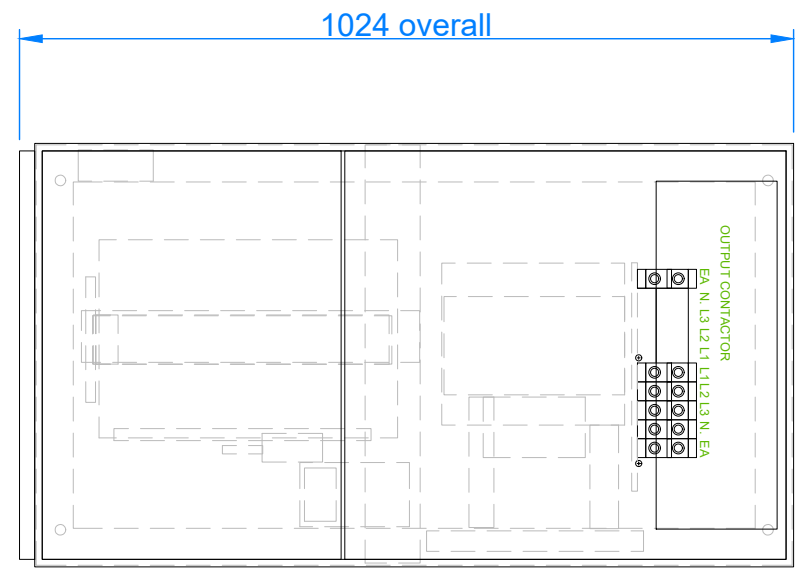
FILE NAME EMS 2101H 3P OUTLINE WIDE BYPASS	
DRAWN 03/06/2024	D.MCPHEDRAN
CHECK 03/06/2024	S.CLINTON
APPR.	
ISSUED 03/06/2024	D.MCPHEDRAN
REV	1A
X No	EXTENDED FRAME (WIDER)
SHEET	SCALE
1	NTS
Watford Control Watford Control Instruments Ltd. Princeswood Road, Corby, Northamptonshire, NN17 4AP www.watfordcontrol.com	
DWG NO	
EMST2101H 3P EXTENDED W/BYPASS	

RevNo	Revision note	Date	Signature	Checked



WARNING: ENSURE STABILISER IS ISOLATED FROM MAINS SUPPLY BEFORE REMOVING OR REPLACING COVERS.

IP RATING	IP20
APPROXIMATE WEIGHT	585 KGS



FILE NAME EMS 2101H 3P OUTLINE	
DRAWN 03/06/2024	D.MCPHEDRAN
CHECK 03/06/2024	S.CLINTON
APPR.	
ISSUED 03/06/2024	D.MCPHEDRAN
REV 1A	
X No	
SHEET 1	SCALE NTS
Watford Control Watford Control Instruments Ltd. Princewood Road, Corby, Northamptonshire, NN17 4AP www.watfordcontrol.com	
DWG NO	
EMS2101H 3P OUTLINE DRAWING	